

DRILLING EDM

ATC • CNC • Manual



24 / 7 Delivering
Increased
Productivity

www.koton.com.tw

EDM
KOTON
TECHNOLOGIES



The Art of **EDM**

The passion I bring to my art, I also bring to my products.
Striving for achievement in art, as in technology.

INDEX

ATC EDM	3
CNC EDM	5
Manual EDM	7
Specifications	9
Optional Accessories	10
Application Areas	10
Machining Samples	10



ATC DRILLING EDM



High Efficiency

Automatic Production



Electrode Tube Auxiliary System

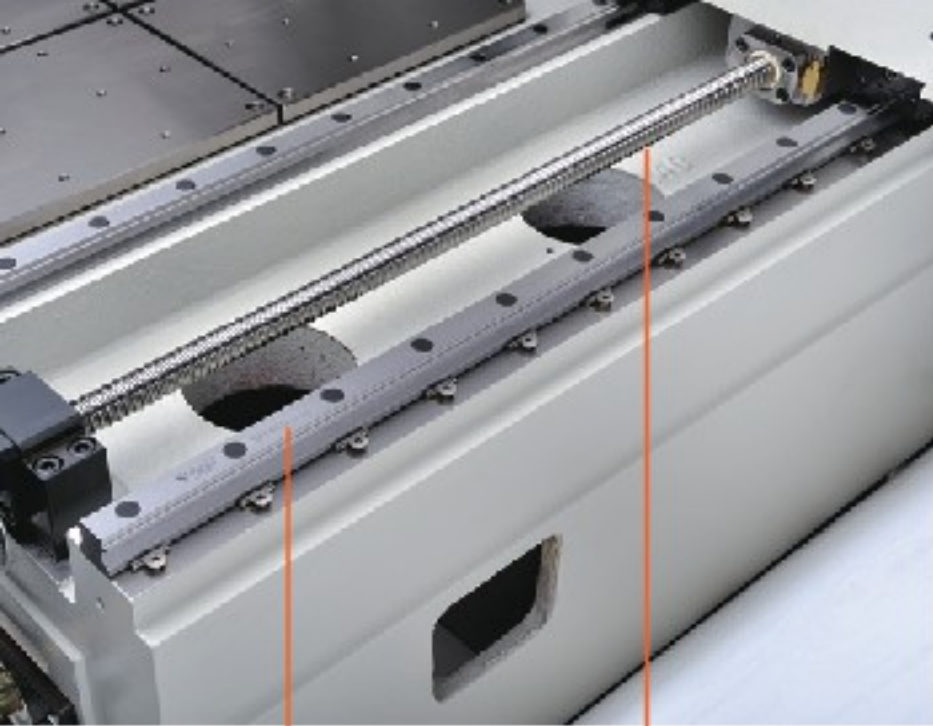
Guiding Tubes

ATC Series

- 630
- 506
- 430
- 305

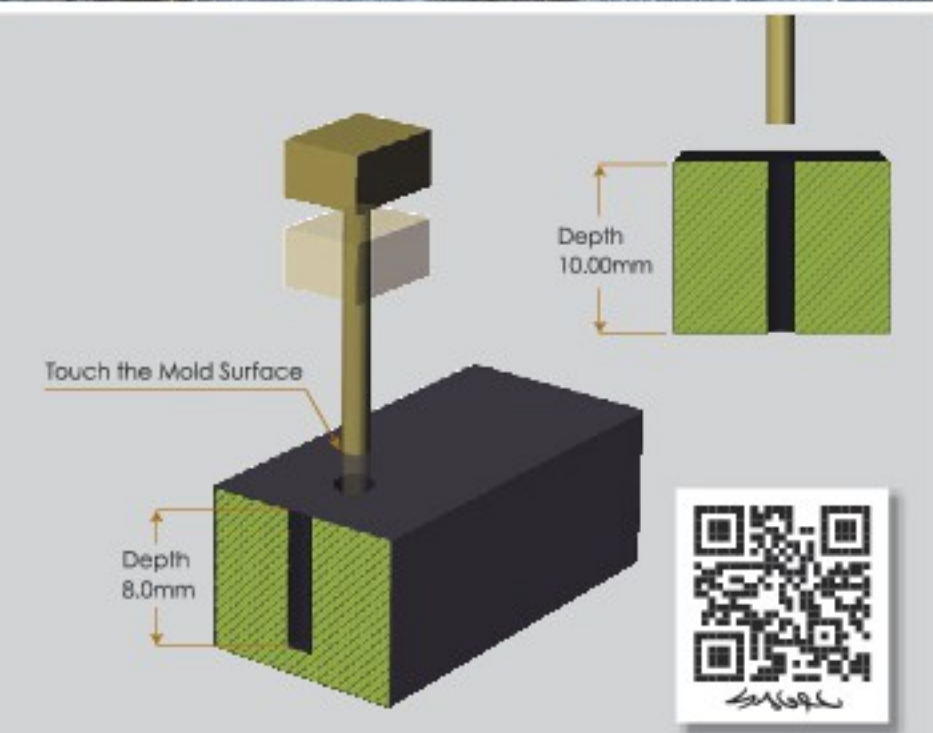
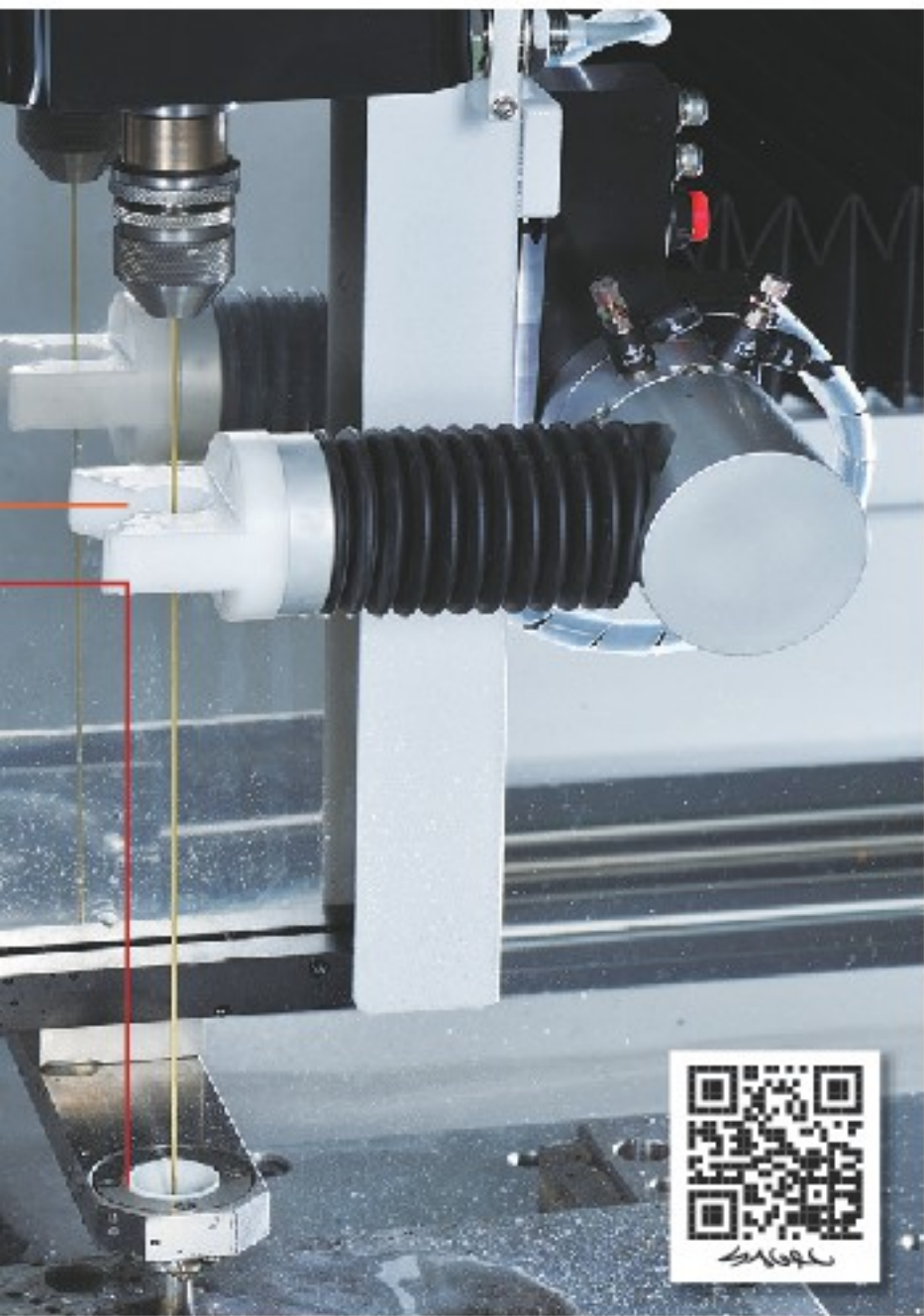


Pneumatic Spindle

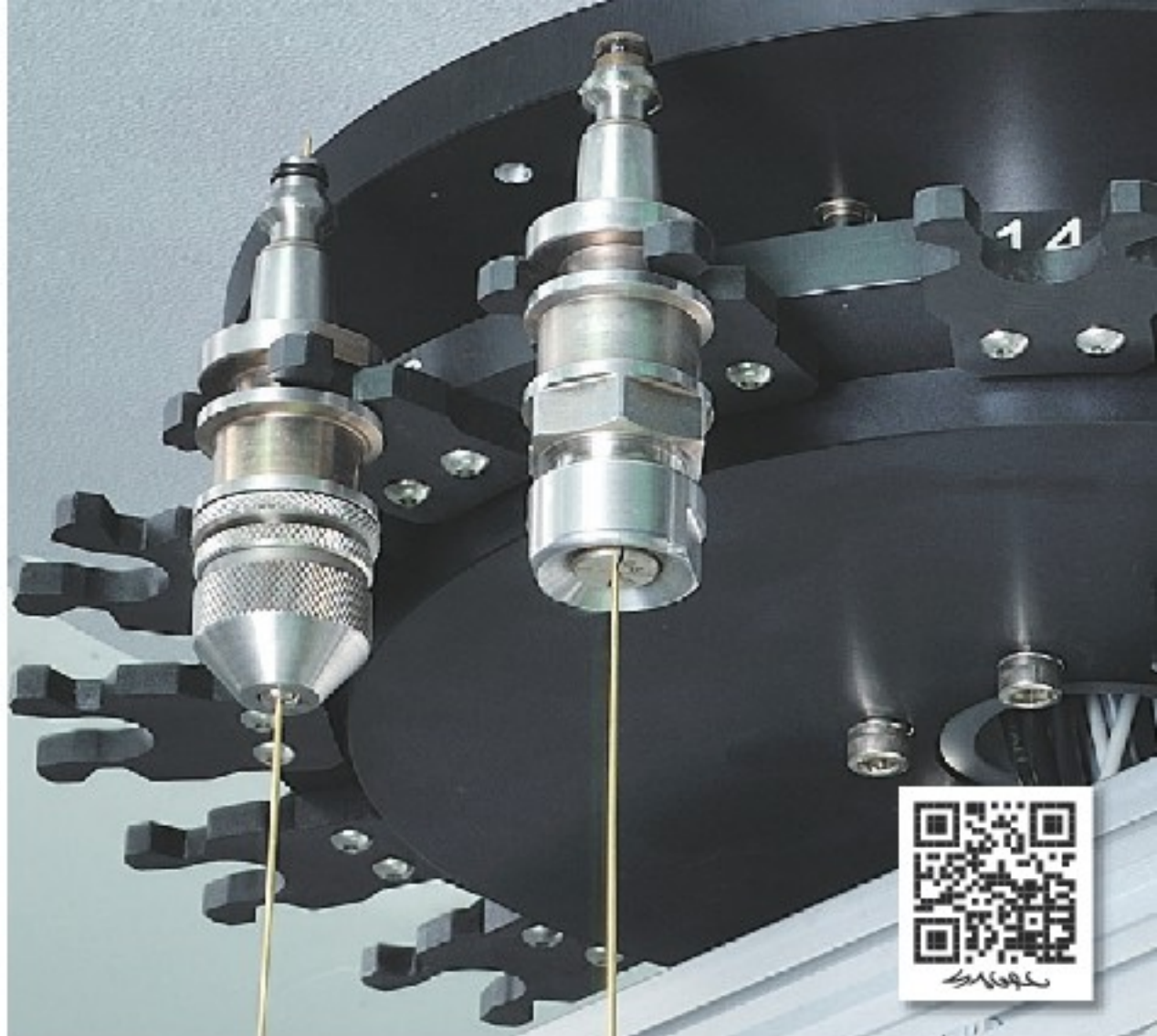


Linear Guideways

Ball Screw



Z Axis Auto Reset and Depth Calculation



Delivering Increased **24 / 7** Productivity

FEATURES

- Automatic 16 & 30 copper tube changers available.
- Automatic copper tube deviation correction.
- There are 3 types machine structures which are suitable for all size molds.
C-Type, Traveling Head, & Double Column.
- Data input by USB or network transfer.

CNC DRILLING EDM

Fast - Stable - Accurate

Conversational Interface



FEATURES

- Precision servo motors on X, Y, Z axes provide excellent stability during drilling.
- Provide 1 μ optical scale, linear slideway and ballscrew to ensure very accurate movement.
- Directly reads NC program G-code and DXF files. Automatically finds the start cutting point and begins a fine hole drilling process.
- The machining coordinate can be input directly when NC program is not available.
- Automatic centering, edge, and internal diameter finding.
- Coordinates can rotate to any angle.
- Drilling capacity from 0.2 mm to 3.0 mm. brass or copper electrode tubes are available.
- Mirror image function.
- Automatically illustrates the path of current and next drilling position with color.
- Z axis auto reset and depth calculation. (Z axis automatically checks hole depth, and returns to complete any that are too shallow.)
- Data input by USB or network transfer.
- Simple and user-friendly interface.

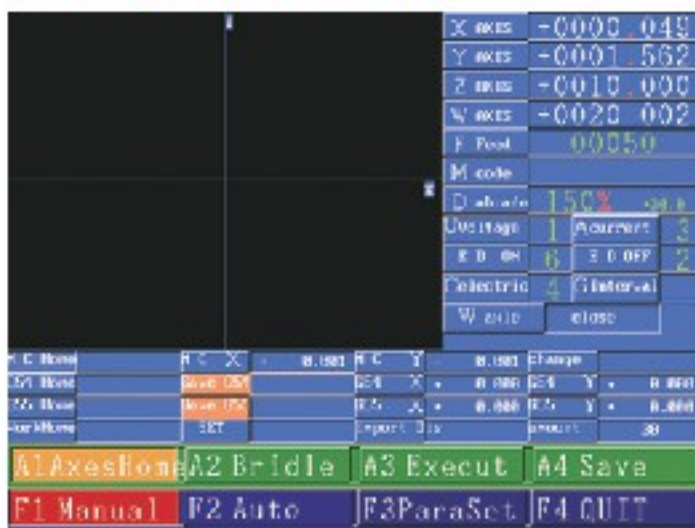
CNC Series



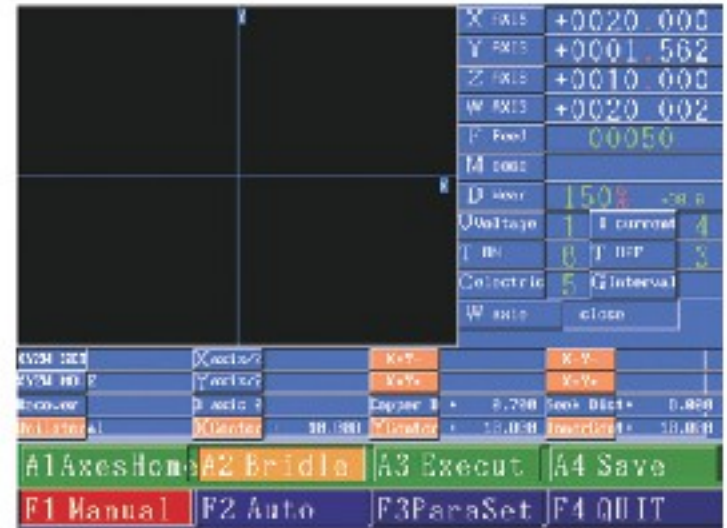
Spindle

- 630
- 506
- 430
- 305
- 205

1. Adjust the Mold



Suitable for mold adjustment of fixed home position.

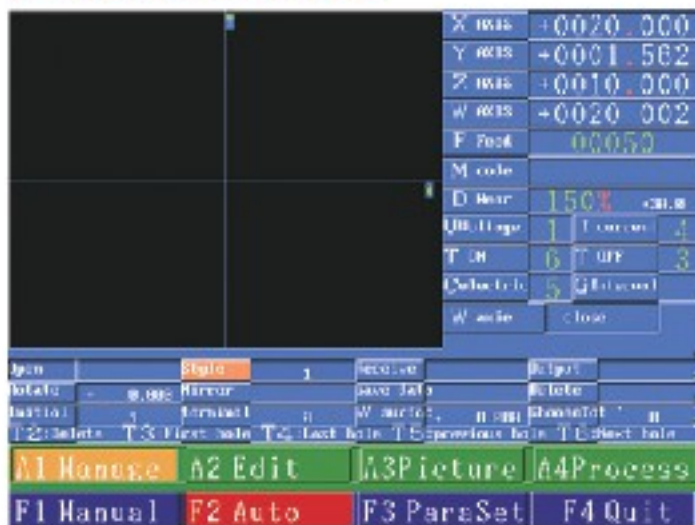


Auto adjustment

There are many types of automatic mold adjustment, you can choose the one suitable for you.



2. Read the File



The file format

There are many formats available, eg: G90, G92, or DXF.....



Open the file

Choose the target folder you saved to.



Mirror function

You can choose any axis you want to mirror. It's easy to see from the picture .



3. Process Setting



You can set up the starting hole and stop hole. Different color has different meaning.



MANUAL DRILLING EDM

With ZNC Function



FEATURES

- Precision servo motor control for stable drilling.
- Designed for drilling hardened tool steel, carbides and other conductive materials.
- Suitable for larger workpieces and plastic molds.
- Drilling capacity from 0.2 mm to 3.0 mm. brass or copper electrode tubes are available.
- Automatic pressure release function.
- Long life worktable is made of stainless steel.



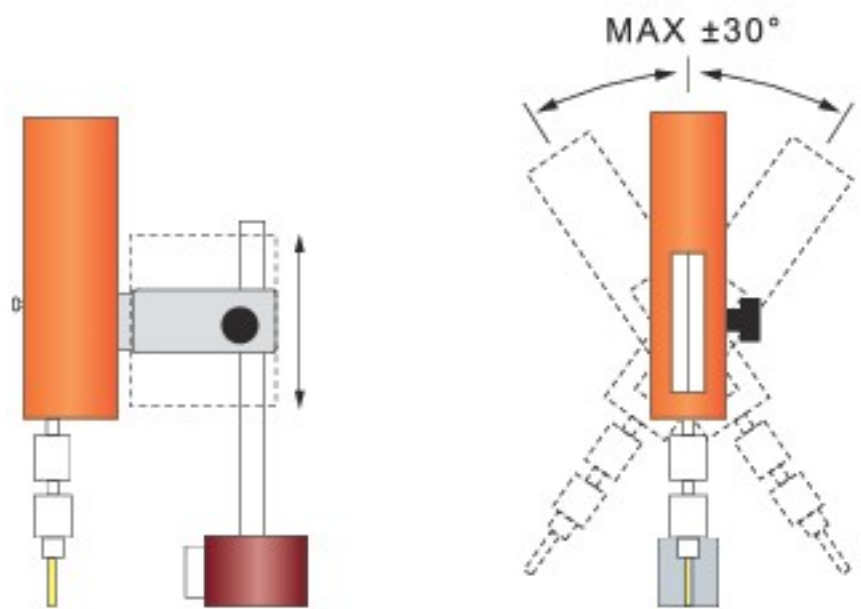
3 Axes D.R.O.

Set the depth that you need to drill.

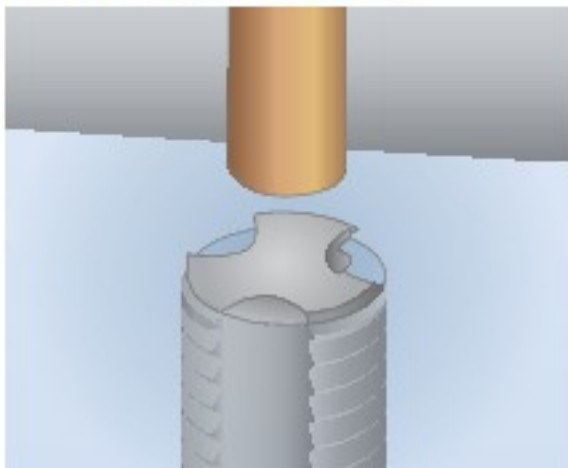
Manual Series

- 405
- 305
- 205
- 200
- 200A

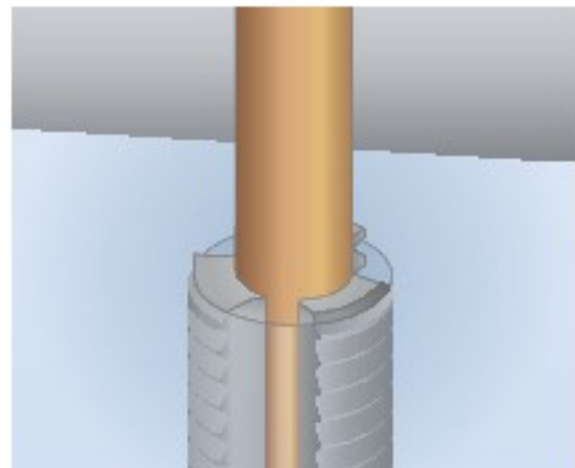
KH-66 Broken Tap Remover



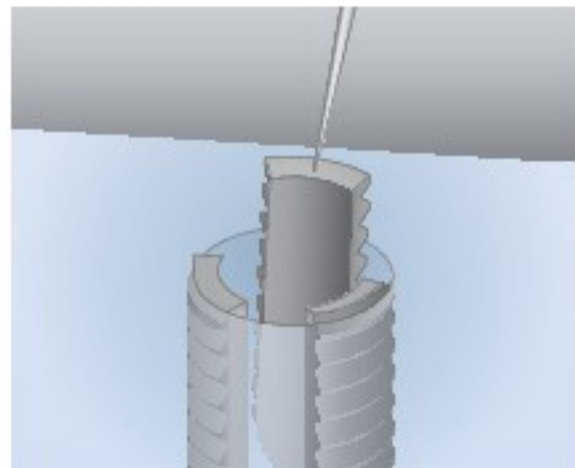
Features and Functions



Drilling in tap center.



High pressure water to flush the residues.



Tap removal by needle to protect screw threads.

Features and Functions

1. Remove taps easily without damage to threads.
2. The portable design and magnetic base, allows quick clamping on top of workpiece for easy machining even for large workpieces.
3. The work head is mounted on a +/- 30° angle slide plate.
4. It is a self-contained unit, complete with dielectric pump and central cooling for electrode holder.
5. Simple and user-friendly operating panel on controller.

Specifications

Generator	Dimensions(mm)	500 x 300 x 220
	Weight(kg)	22
Machine Unit	Dimensions(mm)	270 x 85 x 600
	Weight(kg)	7.5
Workhead Travel		100 mm
Maximum Current Output		10A
Electrode Diameter		Min Ø1.0 mm
Material of Electrode		Max Ø6.3 mm
Dielectric		Brass or Copper Electrode Tube
Generator Power Input		Clean Water
		AC110 or AC220V, a-Phase 50 / 60 Hz

Standard Accessories

1. **Brass Electrode Tubes:** 400 mm (Length):

Ø1.0 mm x 2 pcs	Ø1.5 mm x 2 pcs
Ø2.0 mm x 2 pcs	Ø2.5 mm x 2 pcs
Ø3.0 mm x 2 pcs	Ø3.5 mm x 2 pcs
Ø4.0 mm x 1 pc	Ø5.0 mm x 1 pc
Ø6.0 mm x 1 pc	
2. **Rubber Seal:**

Ø1.0 mm x 2 pcs	Ø2.0 mm x 2 pcs
Ø3.0 mm x 2 pcs	
Ø4.0 mm x 2 pcs	Ø5.0 mm x 2 pcs

Applications

1. Starting holes for wire cut EDM with lower precision operations.
2. Cutting tungsten carbide or any hardened steel.

ATC Specifications

MODEL	UNIT	KTC-630ATC	KTH-506ATC	KTC-430ATC	KTH-305ATC
Work Table Dimensions	mm	600 x 490	600 x 700	515 x 390	500 x 300
Max. Workpiece Dimensions	mm	1185 x 740	800 x 1120	975 x 740	990 x 490
Table Travel X, Y	mm	600 x 300	500 x 600	400 x 300	350 x 250
Z Axis Travel	mm	350	350	350	350
Ram Servo Travel	mm	350	350	350	150
Max. Length of Electrode	mm	400	400	400	400
Min. Electrode Diameter	mm	∅0.2 ~ ∅3.0	∅0.2 ~ ∅3.0	∅0.2 ~ ∅3.0	∅0.2 ~ ∅3.0
Max. Workpiece Weight	kgs	500	500	500	150
Dielectric	—	Water	Water	Water	Water
Capacity of Dielectric	litres	100	100	100	100
Machine Weight (NW / GW)	kg	2100 / 2300	2300 / 2500	2000 / 2200	1000 / 1200
Packing Dimensions	mm	2300 x 1800 x 2240	1900 x 1700 x 2400	2300 x 1800 x 2240	1800 x 1500 x 2240
Machine Structure	—	Traveling Head	Double Column	Traveling Head	C-Type

CNC Specifications

MODEL	UNIT	KTC-630CNC	KTH-506CNC	KTC-430CNC	KTH-305CNC	KTH-205CNC
Work Table Dimensions	mm	600 x 490	600 x 700	510 x 390	500 x 300	500 x 300
Max. Workpiece Dimensions	mm	1185 x 740	800 x 1120	975 x 740	990 x 490	990 x 490
Table Travel X, Y	mm	600 x 300	500 x 600	400 x 300	350 x 250	350 x 250
Z Axis Travel	mm	350	350	350	350	350
Ram Servo Travel	mm	350	350	350	350	150
Max. Length of Electrode	mm	400	400	400	400	400
Min. Electrode Diameter	mm	∅0.2 ~ ∅3.0	∅0.2 ~ ∅3.0	∅0.2 ~ ∅3.0	∅0.2 ~ ∅3.0	∅0.2 ~ ∅3.0
Max. Workpiece Weight	kgs	500	500	500	150	150
Dielectric	—	Water	Water	Water	Water	Water
Capacity of Dielectric	litres	100	100	100	20	20
Machine Weight (NW / GW)	kg	2000 / 2200	2200 / 2400	1900 / 2100	900 / 1000	850 / 950
Packing Dimensions	mm	1500 x 1800 x 2240	1900 x 1700 x 2400	1500 x 1800 x 2240	1300 x 1500 x 2240	1300 x 1500 x 2240
Machine Structure	—	Traveling Head	Double Column	Traveling Head	C-Type	C-Type

Manual Specifications

MODEL	UNIT	KTH-405	KTH-305	KTH-205	KTH-200A	KTH-200
Work Table Dimensions	mm	600 x 300	500 x 300	500 x 300	460 x 210	460 x 210
Max. Workpiece Dimensions	mm	1000 x 500	875 x 470	875 x 470	630 x 420	630 x 420
Table Travel X, Y	mm	450 x 350	350 x 250	350 x 250	300 x 200	300 x 200
Z Axis Travel	mm	350	350	350	350	350
Ram Servo Travel	mm	350	350	150	330	150
Max. Length of Electrode	mm	400	400	400	400	400
Min. Electrode Diameter	mm	∅0.2 ~ ∅3.0	∅0.2 ~ ∅3.0	∅0.2 ~ ∅3.0	∅0.2 ~ ∅3.0	∅0.2 ~ ∅3.0
Max. Workpiece Weight	kgs	300	150	150	80	80
Dielectric	—	Water	Water	Water	Water	Water
Capacity of Dielectric	litres	20	20	20	20	20
Machine Weight (NW / GW)	kg	1000 / 1100	800 / 900	750 / 850	550 / 650	500 / 600
Packing Dimensions	mm	1450 x 1450 x 2240	1240 x 1210 x 2240	1240 x 1210 x 2240	1240 x 1210 x 2240	1240 x 1210 x 2240

Power Supply Specifications

	UNIT	
Max. Current	A	25
Peak Current Setting (IP)	Steps	6
Pulse On-time Setting	Steps	9
Pulse Off-time Setting	Steps	9
High Voltage	Steps	3
Power Input	V	220 / 380 / 415
Max. Rating Power	KVA	4

Optional Accessories



1. ATC Precision Tool Holder



2. ATC Collet Holder



3. Filtration Water Tank

Application Areas



Laptop Keyboard,
Speaker Grille or Cellphone



Medical Equipment



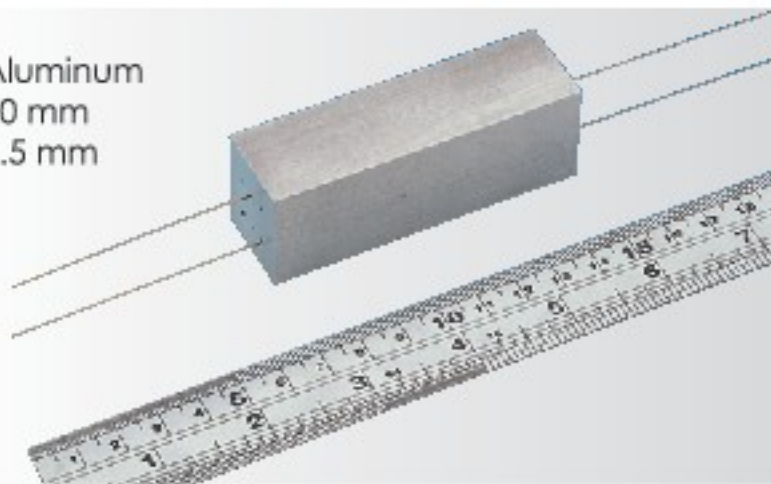
Movement



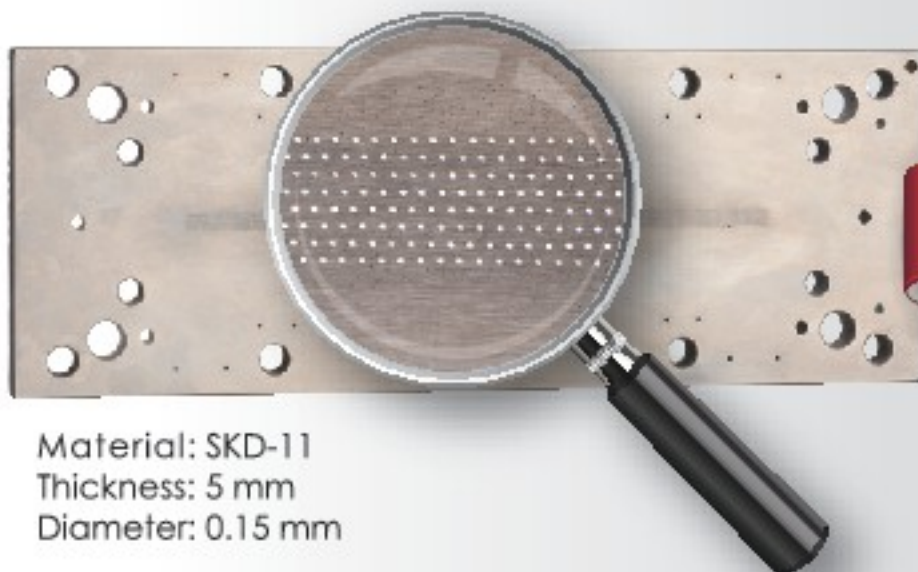
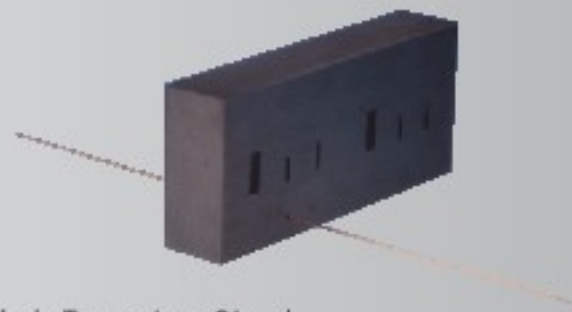
Aerospace Industry

Machining Samples

Material: Aluminum
Thickness: 80 mm
Diameter: 0.5 mm



Material: Tungsten Steel
Thickness: 20 mm
Diameter: 0.5 mm



Material: SKD-11
Thickness: 5 mm
Diameter: 0.15 mm

Finished Product



Speaker Grille
Diameter: 0.3 mm





Scan Now!

Android → Market → Search → **QuickMark** → Install → Scan QR Code
iPhone → App Store → Search **QRcode** → Free Install → Scan QR Code

This QR Code will change the way you access the sourcing information you need. Scan this code with your Smartphone for virtual HD Video tours right into the factory!

Video Catalogs - www.koton.ecatalog.tw



KONTEC PRECISION INDUSTRIAL CO., LTD.

HEADQUARTERS

No. 8, Aly. 5, Ln. 280, Xizhou Rd., Shengang Dist., Taichung City 42948, Taiwan
Tel: +886-4-2562-0557 Fax: +886-4-2562-0267

TAIPEI OFFICE

4F., No. 213, Siwei Rd., Xinzhuang Dist., New Taipei City 24265, Taiwan
Tel: +886-2-2208-3598

koton@koton.com.tw www.koton.com.tw

