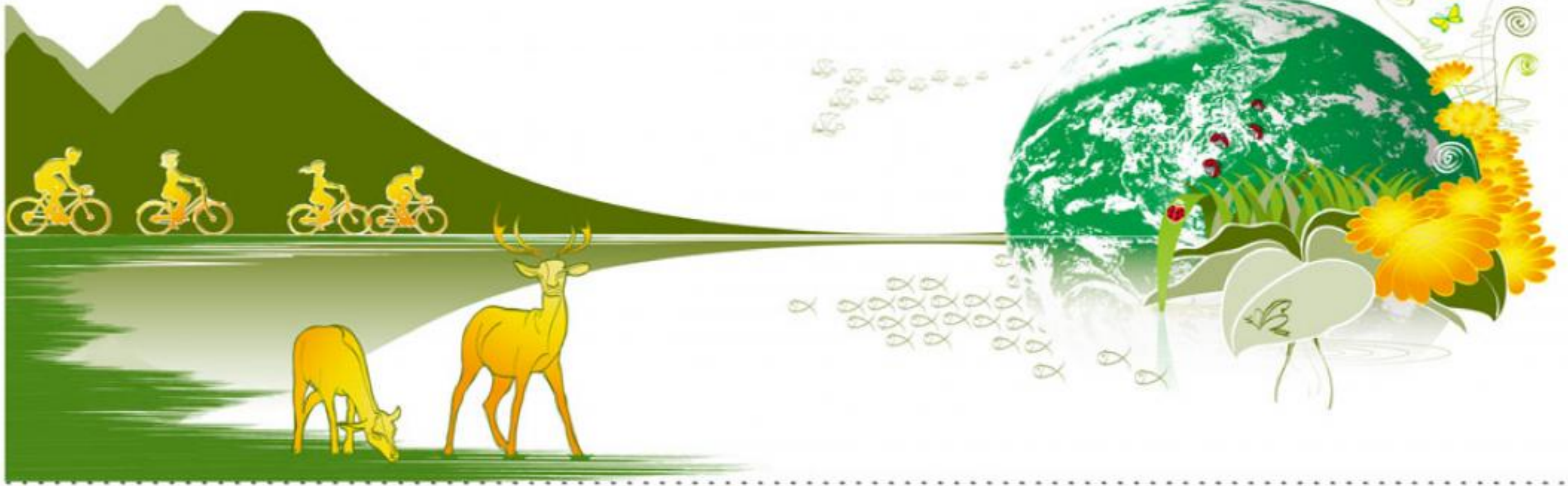




EDM
KOTON
TECHNOLOGIES
EXCELLENCE FROM EVERY ANGLE

www.koton.com.tw






INTRODUCTION

Koton Technologies was first established in August 1988. The first prototype machine we ever built was a Small Bore Drilling Electric Discharge Machine. Years of research and innovative products track our evolution; from our conventional Drilling EDMs, to today's CNC Drilling EDMs and ATC Automatic Brass Tube Changing Drilling EDMs. With our strong developmental history it behooves KOTON to continue R&D on our latest, Multi-Spindle Drilling EDM of enhanced practicality - our answer to society's needs.

KONTEC

PRECISION INDUSTRIAL CO., LTD.



Professionally Manufactured Products :

Our own KOTON EDM brand is proudly displayed on all our products.

1. High Speed Small Bore Drilling EDM; Deep Drilling EDM
2. CNC Small Bore Drilling EDM
3. ATC Automatic Brass Tube Changer, Small Bore Drilling EDM
4. Extra Fine Hole Drilling EDM

Suitable Industries for Our Products :

Our Drilling EDMs are machine tools that employ wire cutting processes used in a huge array of industries. Industries that use our products include in part: die machining, molds for rubber, automotive components, metal parts, national defense, aluminum molds, decorative products manufacture, hardware, computer peripherals, mobile telephones, electronics, food machinery, decorative materials, forged molds, medical equipment, textile machinery, wheels/rims, motherboard molds, LCDs, plasma TVs, communications, die-cast molds, sintered powder molds, tool & cutting tool molds and more. The popularity of our EDMs is due to their ability to improve production speed and bring efficient production fully into play.

Related Industrial Applications :

Grinders, Milling Machines, Boring Machines, Radial Arm Drills, CNC Wire Cutting, CNC Machining Centers.



ATC SERIES

ATC DRILLING EDM



KTC-630ATC



KTH-506ATC



KTC-430ATC



KTH-305ATC



Watch this machine at: www.machinetools.net.tw. Select **Videos**, then enter **M23910**

MODEL	UNIT	KTC-630ATC	KTH-506ATC	KTC-430ATC	KTH-305ATC
Work table dimension	mm	600 x 490	600 x 700	515 x 390	500 x 300
Max. workpiece dimension	mm	1185 x 740	800 x 1120	975 x 740	990 x 490
Table travel X, Y	mm	600 x 300	500 x 600	400 x 300	350 x 250
Z axis travel	mm	350	350	350	350
Ram servo travel	mm	350	350	350	150
Max. length of electrode	mm	400	400	400	400
Min. electrode diameter	mm	Ø0.2 ~ Ø3.0	Ø0.2 ~ Ø3.0	Ø0.2 ~ Ø3.0	Ø0.2 ~ Ø3.0
Max. workpiece weight	kgs	500	500	500	150
Dielectric	—	Water	Water	Water	Water
Capacity of dielectric	litres	100	100	100	100
Machine weight (NW / GW)	kg	2100 / 2300	2300 / 2500	2000 / 2200	1000 / 1200
Packing dimension	mm	2300 x 1800 x 2240	1900 x 1700 x 2400	2300 x 1800 x 2240	1800x 1500 x 2240
Machine structure	—	Traveling Head	Double Column	Traveling Head	C-Type
Max. current	A	25			
Peak current setting (IP)	Steps	6			
Pulse on-time setting	Steps	9			
Pulse off-time setting	Steps	9			
High volts	Steps	3			
Power input	V	220 / 380 / 415			
Max. rating power	KVA	4			

FEATURES:

- Automatic 16 & 30 copper tube changers available.
- Precision servo motors on X, Y, Z axes provide excellent stability during drilling.
- 1 optical scale, linear slideway and ballscrew ensure very accurate movements.
- This series including three types: 1. C-Type; 2. Traveling Head; 3. Double Column
- Automatic copper tube deviation correction.
- Reads NC programs, G code and DXF files; automatically finds starting point before beginning machining process.
- Machining coordinates may be edited directly when NC programming is not available.
- Excellent stability, suitable for automobile and mold production.
- Automatically edge, ID and center position finding.
- Coordinates can automatically rotate to any angle.
- Mirror image function.
- Range of hole diameters: 0.2 ~ 3.0 mm.
- Automatic color display of current and next drilling positions.
- Z axis auto reset and depth calculation. Z axis automatically checks depths of holes, and returns to complete any that are too shallow.
- Data input by USB, or network.
- Easy to learn dialog interface operation.

※ For improvement & research required, we have reserved the right to modify some parts of the specification.





CNC SERIES

CNC DRILLING EDM



KTC-630CNC



KTH-506CNC



KTC-430CNC



KTH-305CNC



KTH-205CNC

MODEL	UNIT	KTC-630CNC	KTH-506CNC	KTC-430CNC	KTH-305CNC	KTH-205CNC
Work table dimension	mm	600 x 490	600 x 700	510 x 390	500 x 300	500 x 300
Max. workpiece dimension	mm	1185 x 740	800 x 1120	975 x 740	990 x 490	990 x 490
Table travel X, Y	mm	600 x 300	500 x 600	400 x 300	350 x 250	350 x 250
Z axis travel	mm	350	350	350	350	350
Ram servo travel	mm	350	350	350	350	150
Max. length of electrode	mm	400	400	400	400	400
Min. electrode diameter	mm	Ø0.2 – Ø3.0	Ø0.2 – Ø3.0	Ø0.2 – Ø3.0	Ø0.2 – Ø3.0	Ø0.2 – Ø3.0
Max. workpiece weight	kgs	500	500	500	150	150
Dielectric	—	Water	Water	Water	Water	Water
Capacity of dielectric	litres	100	100	100	20	20
Machine weight (NW / GW)	kg	2000 / 2200	2200 / 2400	1900 / 2100	900 / 1000	850 / 950
Packing dimension	mm	1500 x 1800 x 2240	1900 x 1700 x 2400	1500 x 1800 x 2240	1300 x 1500 x 2240	1300 x 1500 x 2240
Machine structure	—	Traveling Head	Double Column	Traveling Head	C-Type	C-Type
Max. current	A			25		
Peak current setting (IP)	Steps			6		
Pulse on-time setting	Steps			9		
Pulse off-time setting	Steps			9		
High volts	Steps			3		
Power input	V			220 / 380 / 415		
Max. rating power	KVA			4		

FEATURES:

- Precision servo motors on X,Y,Z axes provide excellent stability during drilling.
- 1 optical scale, linear slideway and ballscrew ensure very accurate movements.
- This series including three types: 1. C-Type; 2. Traveling Head; 3. Double Column
- Reads NC programs, G code and DXF files; automatically finds starting point before beginning machining process.
- Machining coordinates may be edited directly when NC programming is not available.
- Automatically finds edge, ID and center positions.
- Coordinates can automatically rotate to any angle.
- Mirror image function.
- Range of hole diameters: 0.2~3.0 mm.
- Automatic color display of current and next drilling positions.
- Z axis auto reset and depth calculation. Z axis automatically checks depths of holes, and returns to complete any that are too shallow.
- Data input by USB, or network.
- Easy to learn dialog interface operation.

※ For improvement & research required, we have reserved the right to modify some parts of the specification.





CONVENTIONAL

CONVENTIONAL DRILLING EDM SERIES



KTH-405



KTH-305



KTH-205



KTH-200A



KTH-200

MODEL	UNIT	KTH-405	KTH-305	KTH-205	KTH-200A	KTH-200
Work table dimension	mm	600 x 300	500 x 300	500 x 300	460 x 210	460 x 210
Max. workpiece dimension	mm	1000 x 500	875 x 470	875 x 470	630 x 420	630 x 420
Table travel X, Y	mm	450 x 350	350 x 250	350 x 250	300 x 200	300 x 200
Z axis travel	mm	350	350	350	350	350
Ram servo travel	mm	350	350	150	330	150
Max. length of electrode	mm	400	400	400	400	400
Min. electrode diameter	mm	Ø0.2 ~ Ø3.0	Ø0.2 ~ Ø3.0	Ø0.2 ~ Ø3.0	Ø0.2 ~ Ø3.0	Ø0.2 ~ Ø3.0
Max. workpiece weight	kgs	300	150	150	80	80
Dielectric	—	Water	Water	Water	Water	Water
Capacity of dielectric	litres	20	20	20	20	20
Machine weight (NW / GW)	kg	1000 / 1100	800 / 900	750 / 850	550 / 650	500 / 600
Packing dimension	mm	1450 x 1450 x 2210	1240 x 1210 x 2240	1240 x 1210 x 2240	1240 x 1210 x 2240	1240 x 1210 x 2240
Max. current	A			25		
Peak current setting (IP)	Steps			6		
Pulse on-time setting	Steps			9		
Pulse off-time setting	Steps			9		
High volts	Steps			3		
Power input	V			220 / 380 / 415		
Max. rating power	KVA			4		

FEATURES:

- Capable of drilling at any angle, into curved surfaces, and irregular shapes.
- Precision servo motor control for stable drilling.
- Designed for drilling hardened tool steel, carbides and other conductive materials.
- Drilling capacity from 0.2 mm to 3.0 mm diameter; brass or copper electrode tubes.
- The flushing medium used by this machine is distilled water - environmentally friendly.
- Automatic pressure release function is used in the system.
- The long life worktable is made of stainless steel.



※ For improvement & research required, we have reserved the right to modify some parts of the specification.

STANDARD ACCESSORIES

ATC DRILLING EDM



Collet for Adjust



Turret

ATC Spindle

ATC & CNC DRILLING EDM



Linear Guideway
(For KTC-430 and above)



LCD for CNC / ATC Series

CONVENTIONAL DRILLING EDM



Collet Jig / Pipe Guide /
Copper Tube



3 Axis D.R.O.



Filter / Tool Box

OPTIONAL ACCESSORIES Collet Jig / Pipe Guide / Copper Tube / Filter / Collet



Precision Tool Holder



Tool Holder



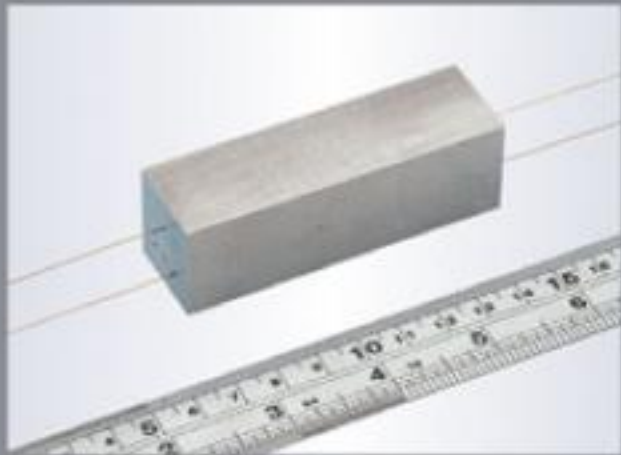
Water Tank



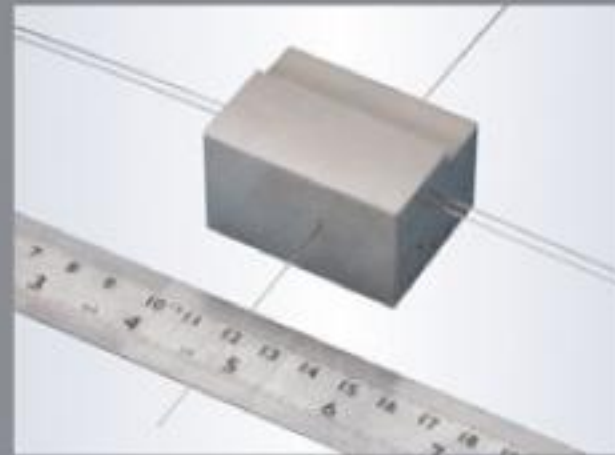
Stabilizer

STANDARD ACCESSORIES

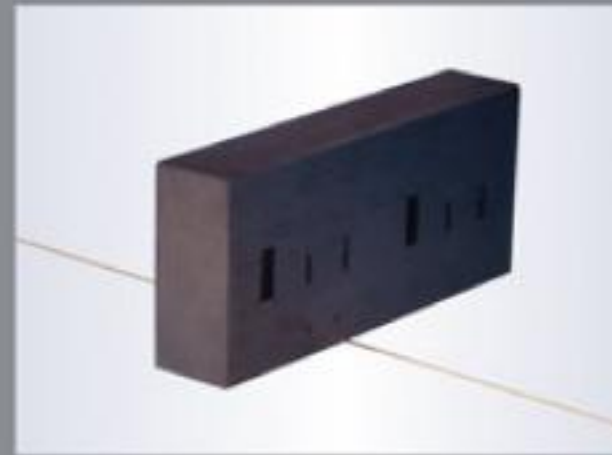
	ATC DRILLING EDM	CNC DRILLING EDM	CONVENTIONAL DRILLING EDM
5 μ 2 axis optical scale and monitor			●
Precision electrode collet jig \varnothing 0.1 ~ \varnothing 3.0mm		●	●
Electrode pipe guide \varnothing 1.0mm	●	●	●
Electrode tube \varnothing 1.0mm x 10	●	●	●
Halogen work lamp	●	●	●
Tool box	●	●	●
Filter x 2	●	●	●
Parallel block	●	●	●
X, Y, Z axis precision ball screw	●	●	●
Auto pressure release pump	●	●	●
X, Y, Z axis precision servo motor	●	●	Z axis
1 μ 2 axis optical scale and LCD	●	●	
X, Y, Z axis hand wheel	●	●	
USB	●	●	
Network	●	●	
X, Y, Z axis linear guideway	For KTC430 and above	For KTC430 and above	
Electrode auto change system	●		
Collet for adjust	●		

MACHINING SAMPLES


Material: Aluminum
Thickness: 80mm
Diameter: \varnothing 0.5mm



Material: SKD11
Thickness: 50mm
Diameter: \varnothing 0.5mm



Material: Tungsten Steel
Thickness: 20mm
Diameter: \varnothing 0.5mm



Material: SKD11
Thickness: 5mm
Diameter: \varnothing 0.15mm

KONTEC PRECISION INDUSTRIAL CO., LTD.

HEADQUARTERS

No. 116, Wenshan 9th St.,
Nantun Dist., Taichung,
Taiwan 40859
Tel : 886-4-2387-1778 (Rep)
Fax: 886-4-2387-3667

www.koton.com.tw

TAIPEI OFFICE

4F., No. 213, Sihwei Rd.,
Sinjhuang City, Taipei
County, Taiwan 24265
Tel : 886-2-2208-3598
Fax: 886-2-2208-3589

koton@ms10.hinet.net

GUANGDONG OFFICE

No. 7, 12 Dong,
Guojimojucheng, Changan,
Dongguan, China
Tel : 86-769-8541-6237
Fax: 86-769-8507-6802

WUJIANG OFFICE

Room 504, 39 Dong,
Meishixia Gu, Songling,
Wujiang, China
Tel : 86-512-6155-0089
Fax: 86-512-6302-0966